

We reserve all right in this document and in the information contained herein. Reproduction or use or disclosure to third parties without express authority is strictly forbidden. NR ENGINEERING INC.

A

B

C

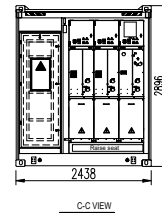
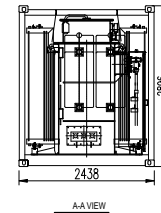
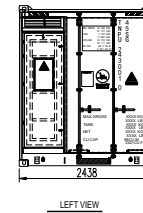
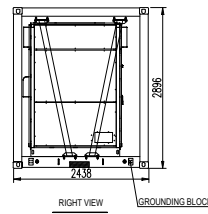
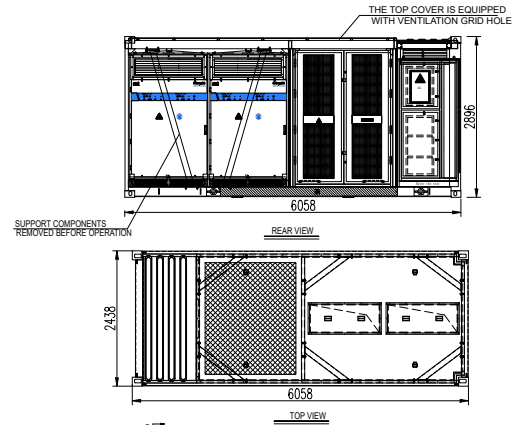
D

A

B

C

D

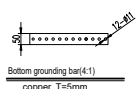
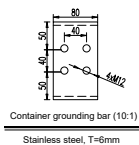
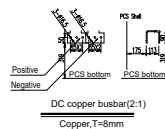
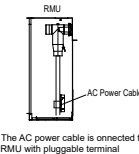
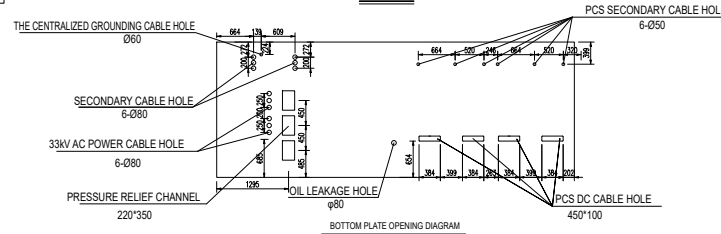


DESIGN NOTES :

1. THE PCS MV SKID SIZE IS 6058X2438X2896mm;
2. THE MASS OF PCS MV SKID : 20t;
3. PRODUCT INSTALLATION METHODS AND REQUIREMENTS:
BOTTOM CORNER SHOULD BE WELDED TO THE EMBEDDED STEEL PLATE IN THE FOUNDATION;
4. PRODUCT GROUNDING METHOD: 4 EXTERNAL GROUNDING BLOCKS ARE SET IN THE BOTTOM FRAME, MADE OF STAINLESS STEEL;
5. TAKING THE REQUIREMENTS OF MAINTENANCE AND HEAT DISSIPATION INTO CONSIDERATION, THE CONSTRUCTION UNIT SHOULD ENSURE THE DISTANCE IN THE LONG SIDE DIRECTION OF PCS MV SKID $\geq 5m$, AND $\geq 2.5m$ IN THE SHORT SIDE DIRECTION ;
6. WHEN DESIGNING THE OVERALL LAYOUT, THE CONSTRUCTION UNIT SHOULD ENSURE THAT THERE IS NO OTHER HEAT SOURCE THAT AFFECTS THE INCOMING WIND AND PCS OPERATION
7. THE OIL MASS IS ABOUT 2.5T (2800L) ,AND AN ACCIDENT OIL POOL SHOULD BE SET UP. IT IS RECOMMENDED TO CONSIDER DESIGN MARGIN
8. THE TRANSFORMER IS TRANSPORTED WITH OIL ;
9. THE PCS MV SKID COLOR IS RAL7035;

ONLY FOR REFERENCE
PLEASE DO THE DESIGN DEPENDING ON NR FORMAL DIAGRAM

No.	Symbol	Name
1		Travel Switch
2		Lamp
3		Smoke Sensor
4		Emergency Lamp



REV.	DESCRIPTION	DATE	NAME	DATE	CONTRACTOR:	MANUFACTURER	PROJECT:	TITLE:	= Installation
						NR NR ELECTRIC CO., LTD	XXXX BESS PROJECT	PCS MV SKID OUTLINE DIAGRAM-5MVA	+ Location
							STAGE:	DWG NO:	SHEET: NEXT:
							SCALE: 1:40	MAPSHEET: A3	TOTAL: VER. :